

2

V

1

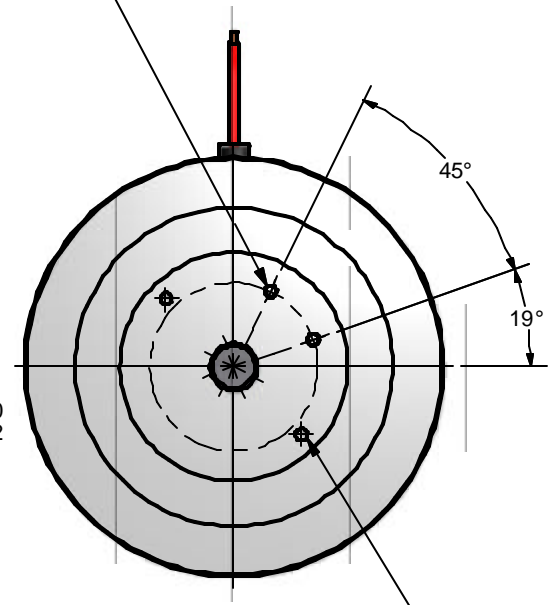
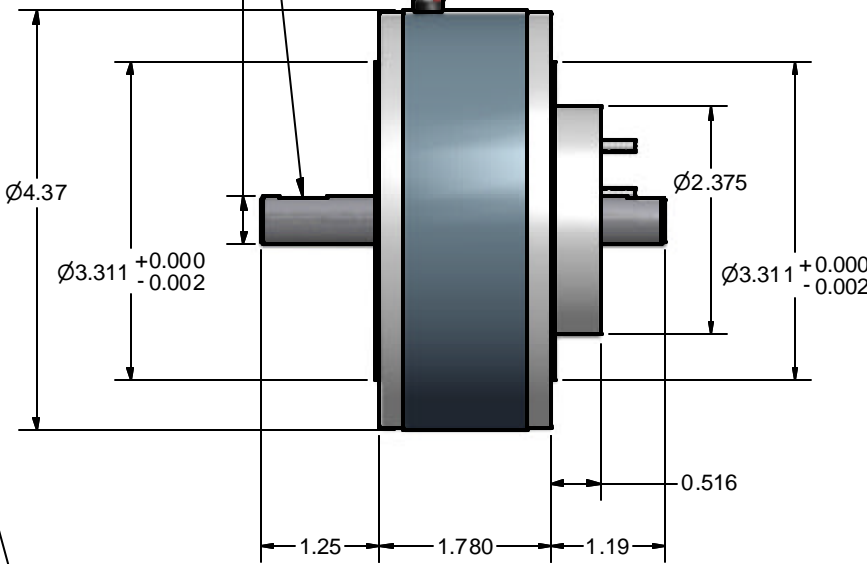
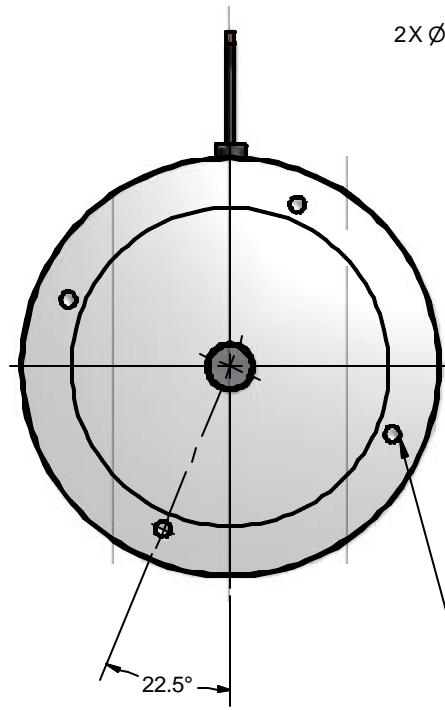
FLAT .01 DEEP X .50 LONG TYP BOTH ENDS

NO. 6-32 UNC-2A THRD.  
2X TERMINALS WITH NUTS

2X Ø0.4995 <sup>+0.0000</sup>  
-0.0005

TACH LEADS NO. 22 AWG 24 L

B



B

NO.8-32 UNC-2B X.21 DEEP  
4 HOLES EQUALLY SPCACED ON  
A Ø3.650 B.C.

NO. 4-40 SCREW  
TYP 2 PLS.-REF

V

V

PERFORMANCE SPECS	UNITS
Peak Torque	453 oz-in
Rated Speed	3000 RPM
Rated Continuous Torque @ 25 C	50 oz-in
Rated Power Output	109 Watts
Continuous Stall Torque	39 oz-in
Cogging Torque	0.0 oz-in
Rated Terminal Voltage	23 Volts
Rated Continuous Current	8.67Amps
Peak Current	72 Amps
Continuous Stall Current	6.8 Amps
Back EMF Constant +/- 10%	5 V/kRPM
Moment of Inertia	.0056 oz-in-sec <sup>2</sup>
Torque Constant +/- 10%	6.8 oz-in/Amp

A

A

DRAWN	29/2/07	UNLESS OTHERWISE SPECIFIED: 1. DIMENSIONS ARE IN INCHES 2. TOLERANCES ANGLES ±1°-30' 3. PLACES DEC +.005 4. SURFACE ROUGHNESS ON MACHINED SURFACES 5. REMOVE ALL BURRS, BREAK SHARP EDGES TO .015 IN. MAX. 6. DIM. LIMITS ARE HOLD AFTER PLATING 7. MACHINED DIAS. ON A COMMON CENTER 8. LINE CONCENTRIC WITHIN .005 T.I.R. 9. UNMACHINED DIAS. CONCENTRIC WITHIN .031 T.I.R. 10. SQUARENESS AND PARALLELISM OF MACHINED SURFACES .002 PER INCH TO A MAX. OF .012 FOR A SINGLE SURFACE.
Sal		
MFG		
APPROVED		

TITLE 9CD/CDT		
PART NO 9CD/CDT	JOB NO	REV
SCALE	SHEET 1 OF 1	

2

V

1